

LXNAV

Firmware update

Firmware Update

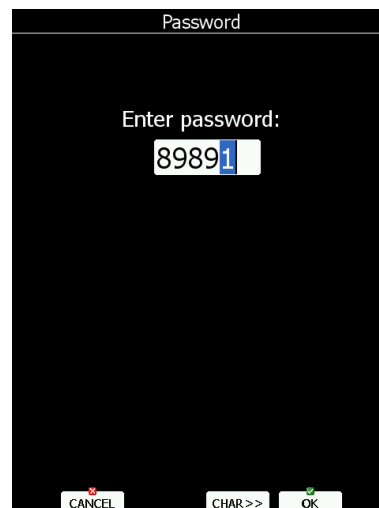
Firmware updates of the main display unit, vario unit or vario indicator can be easily carried out using the SD Card/USB key. Please visit our webpage www.lxnav.com and send us a request for the firmware update.

Update can be also done through Wi-Fi (if internet connection is established and Wi-fi module is enabled on the LX system).

You can also subscribe to a newsletter to receive news about the system automatically.

Updating main display firmware

We will send you an update file and update code. The update code is a string six letters long and the update file has the **.lx8000**, **.lx8080**, **.lx9000**, **.lx9050** or **.lx9070** extension. To proceed with the firmware update copy the update file to a SD card or USB stick and insert it into the main display unit.



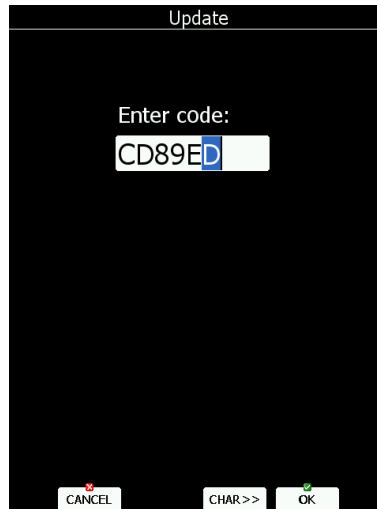
Start the main display unit and go to the Setup->Password menu option.

Enter password **89891** and press **ENTER**.

The system will automatically search for an update file. If more than one update file is found a selection dialogue will appear.

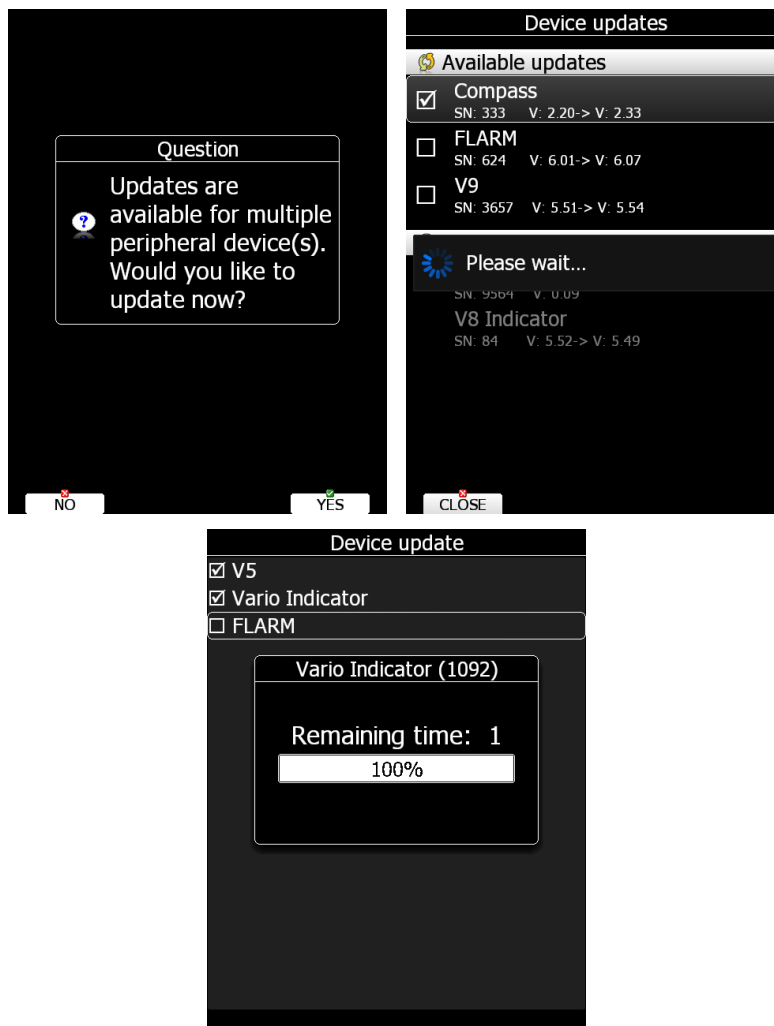
After the update file is selected an update code must be entered.

Enter the update code which was sent to you.



Please note that the update file and update code are a matching pair only applicable to a particular serial number.

Once the update file is verified the main display unit will reboot and the new firmware is ready for use.

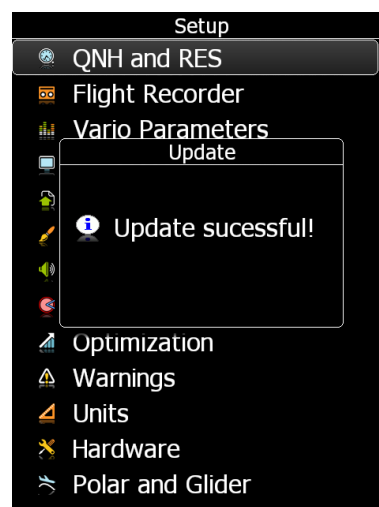
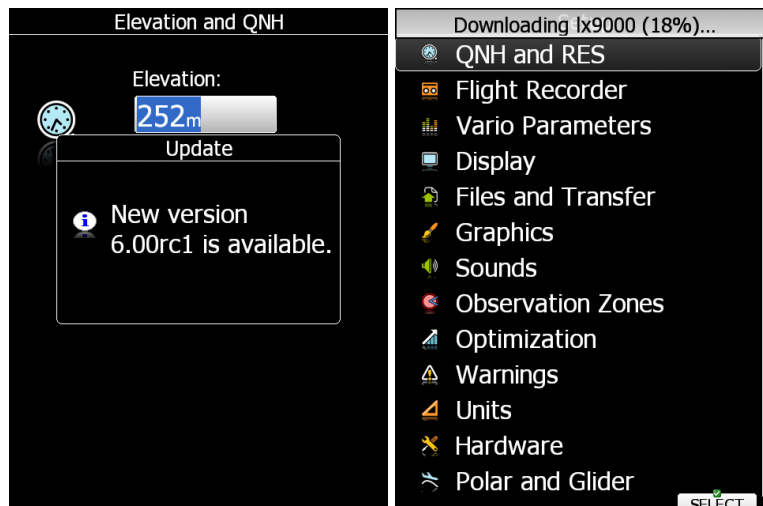


On first run main display unit will also update all devices connected to 485 bus. This update will take approximately five minutes on average.

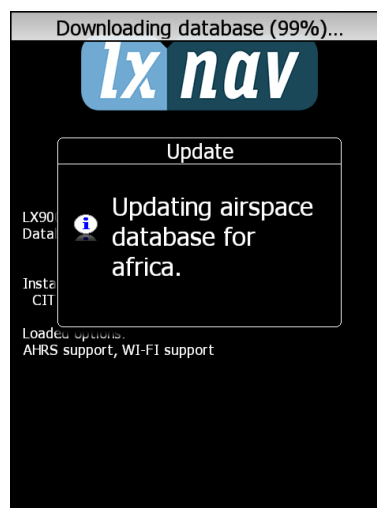
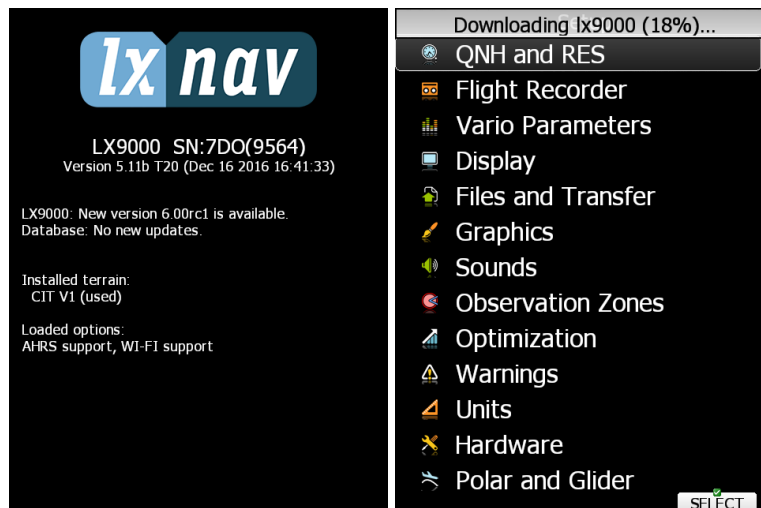
Updating via Wi-fi Module

With the SW version 6.0, it is also possible to make an update without the SD card or USB stick. Once the internet connection is established, system will automatically give you a notification that there is a new update available. User has 3 options available **update** – which will perform the update, **ignore** – this message will be ignored and it won't be shown anymore for this version and **later** option – which will notify you each time after restart.

Update button will download the version, make an update and give a message “update successful”, after that the system will perform a restart. User will also be asked to make an update of peripheral devices. We suggest you to confirm it and update all devices.



Update is also possible at SETUP->ABOUT page, where is the button UPDATE (button is grey if there are no new Updates available). User can update the LX system with the SW version or perform a Database update.



Updating Vario unit or Vario indicator

Start the system and go to the Setup->Password menu option.

Enter password **89891** and press **ENTER**.

The system will automatically search for an update file. If more than one update file is found a selection dialogue will appear.

Select appropriate update file and wait until update will finish.